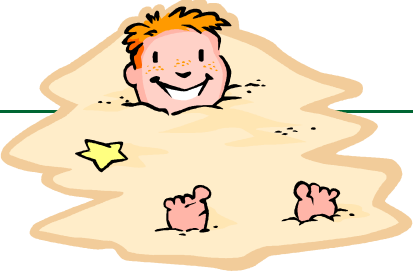
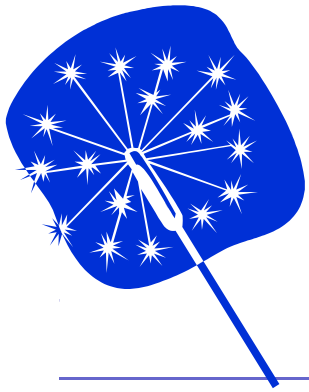


June 2010

Family Advocacy and Community Training, 800 Friedens Rd. Ste. 200, St. Charles MO 63303
 636.949.2425 www.factmo.org

Sun	Mon	Tue	Wed	Thu	Fri	Sat
		1	2 <i>FACT Support Group 6:30-8:30 pm</i>	3	4	5
6 		8	9	10	11	12
13	14 <i>Special Education Basics Workshop 6:30-8:30 PM</i>	15 <i>FACT Support Group 6:30-8:30 pm</i>	16 <i>People First Meeting 6:30</i>	17	18	19
20 <i>Happy Father's Day</i>	21 <i>The IEP Process Workshop 6:30-8:30 PM</i>	22	23	24	25	26
27	28 <i>Effective Communication 6:30-8:30 PM</i>	29	30			



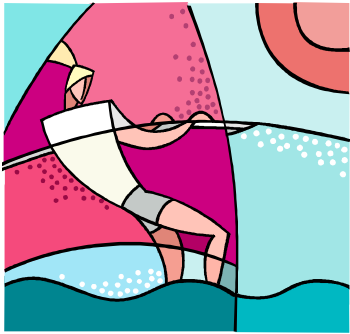


July 2010

Family Advocacy and Community Training, 800 Friedens Rd. Ste. 200, St. Charles MO 63303
636.949.2425 www.factmo.org

Sun	Mon	Tue	Wed	Thu	Fri	Sat
				1	2	3
4 <i>Happy Independence Day</i>	5	6	7 <i>FACT Support Group 6:30-8:30 pm</i>	8 <i>FACT Board Meeting 6:30-8:30 PM FACT Back to School Event</i>	9	10
11	12	13	14	15	16	17
18	19	20 <i>FACT Support Group 6:30-8:30 pm</i>	21 <i>People First Meeting 6:30 Transition Workshop 10:00 to Noon</i>	22	23	24
25	26	27 <i>Child Abuse and Neglect Workshop 6:30-8:30 PM</i>	28 <i>Special Ed. Basics, The IEP Process, and Effective Communication, 8:30—3:15</i>	29	30	31





August 2010

Family Advocacy and Community Training, 800 Friedens Rd. Ste. 200, St. Charles MO
63303

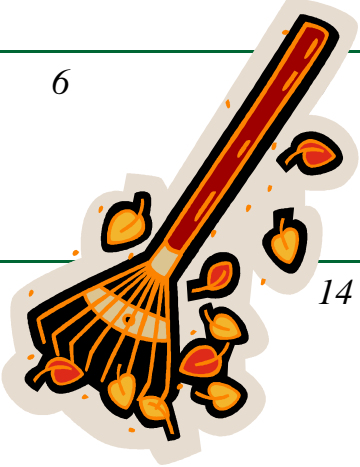
Sun	Mon	Tue	Wed	Thu	Fri	Sat
1	2	3	4	5	6	7
			<i>FACT Support Group 6:30-8:30 pm</i>			
8	9	10	11	12	13	14
	<i>Special Education Basics Workshop 6:30-8:30 PM</i>					
15	16	17	18	19	20	21
	<i>The IEP Process Workshop 6:30-8:30 PM</i>	<i>FACT Support Group 6:30-8:30 pm</i>	<i>People First Meeting 6:30</i>			
22	23	24	25	26	27	28
	<i>Effective Communication 6:30-8:30 PM</i>					
29	30	31				
	<i>Transition Workshop 6:30-8:30 PM</i>	<i>Child Abuse and Neglect Workshop 6:30-8:30 PM</i>				





September 2010

Family Advocacy and Community Training, 800 Friedens Rd. Ste. 200, St. Charles MO 63303
636.949.2425 www.factmo.org

Sun	Mon	Tue	Wed	Thu	Fri	Sat
			1 <i>FACT Support Group 6:30-8:30 pm</i>	2	3	4
5	6		8	9 <i>FACT Board Meeting 6:30-8:30 PM</i>	10	11
12		14	15 <i>People First Meeting 6:30</i>	16	17	18 <i>Special Ed. Basics, The IEP Process, and Effective Communication, 8:30—3:15</i>
19	20	21 <i>FACT Support Group 6:30-8:30 pm</i>	22	23	24	25 <i>Transition Workshop 10:00 to Noon</i>
26	27	28 <i>Child Abuse and Neglect Workshop 6:30-8:30 PM</i>	29	30		



October 2010

Family Advocacy and Community Training, 800 Friedens Rd. Ste. 200, St. Charles MO 63303
636.949.2425 www.factmo.org

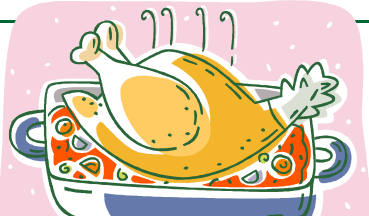
Sun	Mon	Tue	Wed	Thu	Fri	Sat
					1	2
3	4	5	6	7	8	9
			FACT Support Group 6:30-8:30 pm			
10	11 Special Education Basics Workshop 6:30-8:30 PM	12	13	14	15	16
17	18 The IEP Process Workshop 6:30-8:30 PM	19 FACT Support Group 6:30-8:30 pm	20 People First Meeting 6:30	21	22	23
24	25 Effective Communication 6:30-8:30 PM	26 Child Abuse and Neglect Workshop 6:30-8:30 PM	27	28 Transition Workshop 6:30-8:30 PM	29	30
31 Happy Halloween						





November 2010

Family Advocacy and Community Training, 800 Friedens Rd. Ste. 200, St. Charles MO 63303
636.949.2425 www.factmo.org

Sun	Mon	Tue	Wed	Thu	Fri	Sat
	1 <i>Special Education Basics Workshop 6:30-8:30 PM</i>	2	3 <i>FACT Support Group 6:30-8:30 pm</i>	4	5	6
7 <i>Daylight Savings Don't forget to change your clocks!</i>	8 <i>The IEP Process Workshop 6:30-8:30 PM</i>	9	10	11 <i>FACT Board Meeting 6:30-8:30 PM</i>	12	13
14	15 <i>Effective Communication 6:30-8:30 PM</i>	16 <i>FACT Support Group 6:30-8:30 pm</i>	17 <i>People First Meeting 6:30</i>	18	19	20
21	22 <i>Transition Workshop 6:30-8:30 PM</i>	23	24	25 <i>Happy Thanksgiving</i>	26 <i>F.A.C.T. Closed</i>	27
28	29	30 <i>Child Abuse and Neglect Workshop 6:30-8:30 PM</i>				

December 2010

Family Advocacy and Community Training, 800 Friedens Rd. Ste. 200, St. Charles MO 63303
636.949.2425 www.factmo.org

Sun	Mon	Tue	Wed	Thu	Fri	Sat
			1 <i>FACT Support Group 6:30-8:30 pm</i>	2	3	4
5	6	7	8	9	10	11 <i>Special Ed. Basics, The IEP Process, and Effective Communication, 8:30—3:15</i>
12	13	14	15 <i>People First Meeting 6:30</i>	16	17	18 <i>Transition Workshop 10:00 to Noon</i>
19	20	21 <i>FACT Support Group 6:30-8:30 pm</i>	22	23	24 <i>F.A.C.T. Closed</i>	25 <i>Merry Christmas</i>
26	27 <i>F.A.C.T. Closed</i>	28 <i>F.A.C.T. Closed</i>	29 <i>F.A.C.T. Closed</i>	30 <i>F.A.C.T. Closed</i>	31 <i>F.A.C.T. Closed</i>	